

Please read all of the following information before using this product.

TherAdapt[®] Products Inc. has designed and manufactured this product with the well being of the user and caregiver(s) in mind. It is our endeavor to provide products which are attractive, comfortable, useful, highly adjustable, long lasting and safe. As when using any product, precautions must be taken.



WARNING: This product must only be used under the recommendation of a physician and / or licensed therapist and with adult supervision. Never leave user unattended. It is your responsibility to properly use and maintain your Extended Easel. Failure to follow USE and CARE instructions or ASSEMBLE the easel properly as outlined may result in bodily injury.

THE MANUFACTURER IS NOT RESPONSIBLE FOR INJURIES RESULTING FROM ANY CUSTOMIZATION OR MODIFICATION OF THE EQUIPMENT THAT WAS NOT COMPLETED BY THE MANUFACTURER.

USE: The Extended Easel is designed for a single purpose: as a freestanding easel. It is to be used on the floor only. No other use is permitted.

CARE: Take care to inspect the ongoing condition of all parts of your Extended Easel. Verify that all knobs, bolts, and washers are properly positioned and secure. Contact the manufacturer for replacement or repair of necessary items. All components may be cleaned with mild soap and water, or a gentle sanitizing spray. Do not use abrasive cleaners. Wipe wood components dry after cleaning. Excess amounts of liquid on the wood may damage the finish. Always store indoors.

WARRANTY: The manufacturer provides a full one (1) year warranty, beginning the date shipped by the manufacturer. The warranty provides full replacement of all parts against breakage when used in compliance with the manufacturer's USE and CARE instructions. Use or modification beyond the normal capacity or range of adaptability designed into the products will void the warranty. The foregoing is TherAdapt's sole liability for consequential damages.

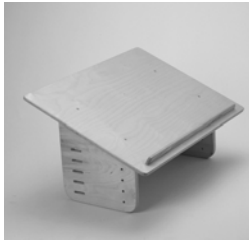
PLEASE COMPLETE AND RETAIN FOR YOUR RECORDS

Extended Easel EE- _____

Serial Number: _____

Purchase date: _____

TherAdapt[®] Extended Easel (EE-100/200) Instructions



Front edge

Choose a size



Packing List:

- (1) Easel top component
- (2) Legs
- (4) 1 3/4" 1/4 -20 hex head bolts
- (4) Thru-knobs with 1/4 -20 threaded inserts
- (4) Nylon washers

Attach the legs to the Easel top

The “angled” upright of the leg should be toward the front of the easel. Place a bolt through the desired hole/slot combinations to achieve the following height of the front edge to the floor. Place a nylon washer between the wood and knob. **Tighten all knobs securely before using.**



Horizontal

Center hole, Top slot
4th hole, 2nd slot
Bottom hole, Center slot

LS-6 LS-12 LS-18 LS-24 LS-30

| | | | | | |
|--|---------|---------|---------|---------|---------|
| | 9" | 15" | 21" | 27" | 33" |
| | 10 1/2" | 16 1/2" | 22 1/2" | 28 1/2" | 34 1/2" |
| | 12" | 18" | 24" | 30" | 36" |



10° Angle

2nd hole, Top slot
Center hole, 2nd slot
4th hole, Center slot
Bottom hole, 4th slot

| | | | | | |
|--|---------|---------|---------|---------|---------|
| | 7 1/2" | 13 1/2" | 19 1/2" | 25 1/2" | 31 1/2" |
| | 9" | 15" | 21" | 27" | 33" |
| | 10 1/2" | 16 1/2" | 22 1/2" | 28 1/2" | 34 1/2" |
| | 12" | 18" | 24" | 30" | 36" |



25° Angle

Top hole, Top slot
2nd hole, 2nd slot
Center hole, Center slot
4th hole, 4th slot
Bottom hole, Bottom slot

| | | | | | |
|--|---------|---------|---------|---------|---------|
| | 6" | 12" | 18" | 24" | 30" |
| | 7 1/2" | 13 1/2" | 19 1/2" | 25 1/2" | 31 1/2" |
| | 9" | 15" | 21" | 27" | 33" |
| | 10 1/2" | 16 1/2" | 22 1/2" | 28 1/2" | 34 1/2" |
| | 12" | 18" | 24" | 30" | 36" |



45° Angle

Top hole, 2nd slot
2nd hole, Center slot
Center hole, 4th slot
4th hole, Bottom slot

| | | | | | |
|--|---------|---------|---------|---------|---------|
| | 6" | 12" | 18" | 24" | 30" |
| | 7 1/2" | 13 1/2" | 19 1/2" | 25 1/2" | 31 1/2" |
| | 9" | 15" | 21" | 27" | 33" |
| | 10 1/2" | 16 1/2" | 22 1/2" | 28 1/2" | 34 1/2" |



60° Angle

Top hole, Center slot
2nd hole, 4th slot
Center hole, Bottom slot

| | | | | | |
|--|--------|---------|---------|---------|---------|
| | 6" | 12" | 18" | 24" | 30" |
| | 7 1/2" | 13 1/2" | 19 1/2" | 25 1/2" | 31 1/2" |
| | 9" | 15" | 21" | 27" | 33" |

| <u>LS-6+</u> | <u>LS-12+</u> | <u>LS-18+</u> | <u>LS-24+</u> | <u>LS-30+</u> |
|---------------------|----------------------|----------------------|----------------------|----------------------|
| <u>LS-6</u> | <u>LS-6</u> | <u>LS-6</u> | <u>LS-6</u> | <u>LS-6</u> |

Horizontal

| | | | | | |
|--------------------------|---------|---------|---------|---------|---------|
| Center hole, Top slot | 15" | 21" | 27" | 33" | 39" |
| 4th hole, 2nd slot | 16 1/2" | 22 1/2" | 28 1/2" | 34 1/2" | 40 1/2" |
| Bottom hole, Center slot | 18" | 24" | 30" | 36" | 42" |

10° Angle

| | | | | | |
|-----------------------|---------|---------|---------|---------|---------|
| 2nd hole, Top slot | 13 1/2" | 19 1/2" | 25 1/2" | 31 1/2" | 37 1/2" |
| Center hole, 2nd slot | 15" | 21" | 27" | 33" | 39" |
| 4th hole, Center slot | 16 1/2" | 22 1/2" | 28 1/2" | 34 1/2" | 40 1/2" |
| Bottom hole, 4th slot | 18" | 24" | 30" | 36" | 42" |

25° Angle

| | | | | | |
|--------------------------|---------|---------|---------|---------|---------|
| Top hole, Top slot | 12" | 18" | 24" | 30" | 36" |
| 2nd hole, 2nd slot | 13 1/2" | 19 1/2" | 25 1/2" | 31 1/2" | 37 1/2" |
| Center hole, Center slot | 15" | 21" | 27" | 33" | 39" |
| 4th hole, 4th slot | 16 1/2" | 22 1/2" | 28 1/2" | 34 1/2" | 40 1/2" |
| Bottom hole, Bottom slot | 18" | 24" | 30" | 36" | 42" |

45° Angle

| | | | | | |
|-----------------------|---------|---------|---------|---------|---------|
| Top hole, 2nd slot | 12" | 18" | 24" | 30" | 36" |
| 2nd hole, Center slot | 13 1/2" | 19 1/2" | 25 1/2" | 31 1/2" | 37 1/2" |
| Center hole, 4th slot | 15" | 21" | 27" | 33" | 39" |
| 4th hole, Bottom slot | 16 1/2" | 22 1/2" | 28 1/2" | 34 1/2" | 40 1/2" |

60° Angle

| | | | | | |
|--------------------------|---------|---------|---------|---------|---------|
| Top hole, Center slot | 12" | 18" | 24" | 30" | 36" |
| 2nd hole, 4th slot | 13 1/2" | 19 1/2" | 25 1/2" | 31 1/2" | 37 1/2" |
| Center hole, Bottom slot | 15" | 21" | 27" | 33" | 39" |

